

Home Upgrade CABEC Conference

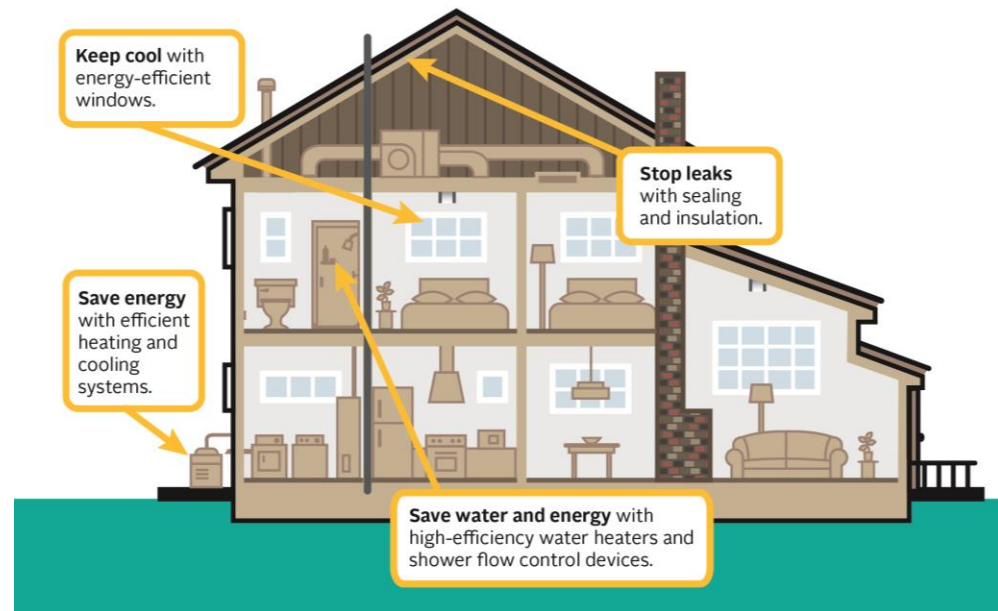
October 10, 2014



Home Upgrade
Energy Upgrade California®

Agenda

- Home Upgrade Offers
 - Home Upgrade
 - Advanced Home Upgrade
 - Home Energy Assessment
- Software Project



Home Upgrade



- Prescriptive/ Performance Hybrid
- Capped at \$2,500
- 100+ points required
- Minimum three measures required (1+ base)

POINTS	INCENTIVE
100	\$1,000
150	\$1,500
200	\$2,000
250	\$2,500



Home Upgrade



Category	Upgrade	Technical Specifications	Points	
Base Measures (1 or more)	Duct Sealing	Seal to $\leq 10\%$ for existing systems	25	
	Duct Replacement	Seal to $\leq 6\%$ for replacement ducts (Must include R-8 duct insulation, Duct Insulation may NOT be claimed as a separate measure)	65	
	Whole Building Air Sealing	$\geq 15\%$ leakage reduction from starting default ACHn	25	
	Whole Building Air Sealing	$\geq 30\%$ leakage reduction from starting default ACHn (Vintage 1993+ not eligible)	45	
	*Attic Insulation & Air Sealing	Insulation $\geq R-30$ ($\geq R-38$ in climate zones 1 & 11-16) & Air Seal the Attic Plane	55	
	*Attic Insulation & Air Sealing	Insulation $\geq R-44$	65	
Base Measure Kickers*	2 nd Base Measure	Total of two base measures	15	
	3 rd Base Measure	Total of three base measures (In addition to 2 nd base measure kicker)	20	
Flex Measures	Wall Insulation	Insulate $\geq R-13$	50	
	Windows	$\leq U-0.32$ (All windows or 17% of Conditioned area sq ft)	70	
	Floor Insulation	Insulate $\geq R-19$	40	
	Duct Insulation	Insulate $\geq R-8$ (R-6 allowed if R-8 not feasible. Buried ducts allowed)	40	
	Furnace	$\geq 92\%$ AFUE	60	
	Furnace	$\geq 95\%$ AFUE	70	
	Wall Furnace	$\geq 70\%$ AFUE	40	
	Air Conditioner	≥ 14 SEER/12 EER	65	
	Air Conditioner	≥ 15 SEER	75	
	Gas Storage Water Heater	EF ≥ 0.67	35	
	Gas On-Demand Water Heater	EF ≥ 0.82	90	
	Electric Storage Water Heater	EF ≥ 0.93	40	
Mandatory Measures	DHW Pipe Wrap	1" 5 ft. of hot and cold water pipes must be insulated to $\geq R-4.2$ unless not feasible	0	
	Thermostatic Control Valve	Mandatory unless not feasible	0	
	Low-Flow Showerhead	Must be performed unless not feasible	0	
	CO Alarm	Install in homes with attached garage or gas appliance	0	
TOTAL:				

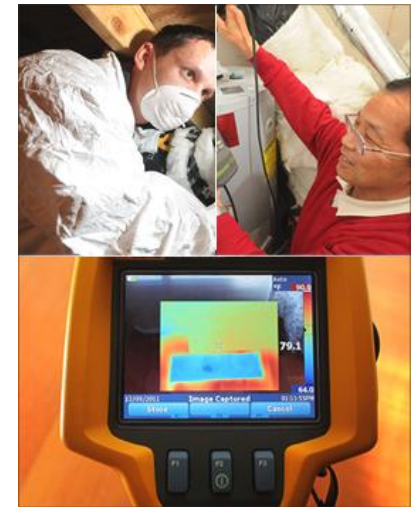


Advanced Home Upgrade

- Performance based (Energy Pro Modeling)
- Incentives start at \$1,000 (No incentive cap)
- Customized solution based on an energy assessment; allows for deeper retrofits
- Home modeling and diagnostic testing is required

Eligible measures include the following:

- Air sealing
- Duct sealing
- Attic insulation
- High-efficiency furnaces
- High-efficiency cooling systems
- Wall insulation
- Windows
- Cool roofs
- Lighting
- Pool pumps
- Appliances
- Wall furnaces
- Low-flow shower head
- Dishwasher upgrade
- Domestic hot water upgrade
- Door upgrade
- Refrigerator upgrade
- Whole house fan
- and more!



Home Energy Assessment (SDG&E)

Home Assessment Report:

- EnergyPro Generated Home Performance Report
- Contractor Scope of Work Proposal
- Homeowner Guide
- SDGE Energy Upgrade California My Action Plan
- California Home Energy Rating Score (if applicable)
- Energy Efficiency & Renewable Energy Financing Options
- Energy Efficiency & Renewable Program Information

Home Assessment Kit Contents:

- Five LED Lamps
- One Smart Power Strip
- One Low-Flow Showerhead Fixture
- One Low-Flow Faucet Aerator
- One Thermostatic Shut-off Valve Fixture



Becoming A Participating Contractor or Rater

Benefits:

- Training and mentoring opportunities
- Expand your technical and no-technical skills
- Listed on the online directory for utility customers
- Connect with Homeowners interested in Upgrades

Eligibility:

- Attend Orientation Workshop
- CSLB License
- Insurance or Bonding Requirements
- Contractor/Rater Participation Agreements



Software Project

CPUC Project Directive: "We direct Commission Staff and the IOUs to work collaboratively with the California Energy Commission and other Energy Upgrade California stakeholders to identify approaches to adequately **broaden allowable software under Energy Upgrade California** while containing costs required for needed Commission Staff Reviews"

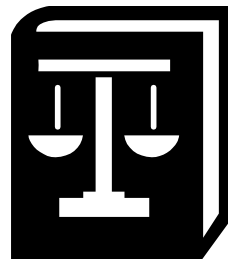
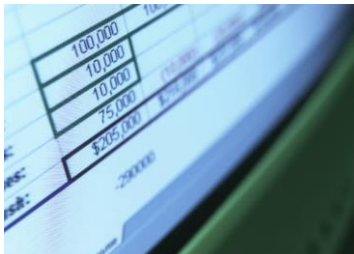
(Ordering Paragraph 61 of Decision 12-05-015)



More Accurate Models

CalTEST – California Test for Energy Software Tools

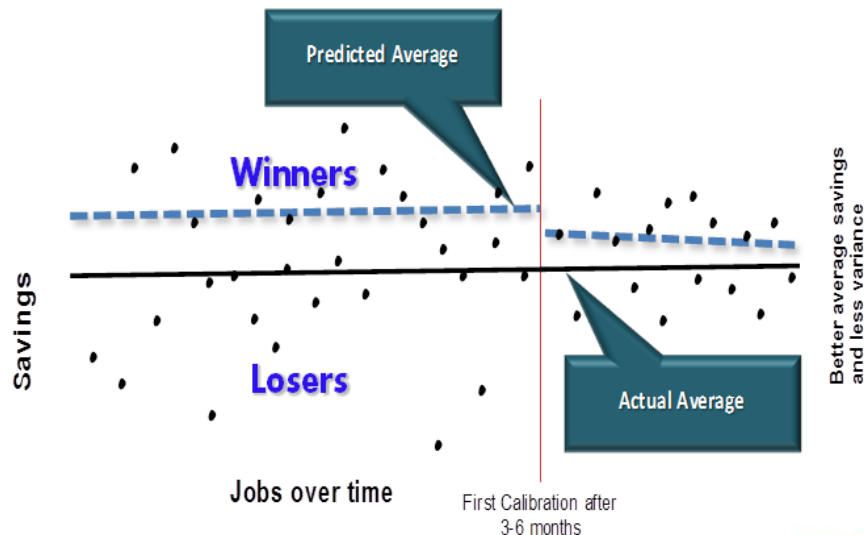
- Data set of typical EUC Homes
- Calibrated and Un-calibrated Models of EUC Homes compared to actual results
- Program uses these results to determine software eligibility
- Initial adjustment factor may be applied to savings predictions



Ensure Delivery of Savings as Predicted

CalTRACK – Data-Driven Tracking and Feedback System

- Jobs tracked by software version used, climate zone, etc.
- Savings predictions compared to weather normalized post retrofit billing data (calibrated)
- Adjustment factor for performance by software and climate zone to further calibrate predictions on an ongoing basis



New Software Benefits

- Software accurately predicts savings on average
- Contractors deliver on predicted savings
- More choice for modeling software s for contractors
- Homeowners get the energy savings they're promised
- Strong link between incentives and savings
- Less risk (greater predictability) for investors
- Better environment for private capital and Industry Investment



Next Steps

1. Analyze Past Performance Data	Complete
2. Define Required HPXML Dataset and Schema Definition (HPXSD)	Complete
3. Develop CalTEST: A system to screen software against past EUC homes to test predictive accuracy	Complete
4. Develop CalTRACK: A system to calibrate software predictions to actual billing data on an ongoing basis	Underway
5. Launch CalTEST: Test and Approve new Software, On-board software (ensure inter-operability with back-end data systems), Allow software models to be used to predict savings on actual Home Upgrade homes	Sept-Oct 2014
6. Launch CalTRACK: Implement approved software systems for ongoing tracking and reporting	Sept 2015



Questions

